

CSS-800

Touch Key Proximity RFID



Android ios



- Mobile NFC/ BLE
- 400 sets of function key
- Anti pass back/ Anti duress
- Basic Time & Attendance(First IN/Last OUT)
- Color screen with touch keypad
- LOGs data real time PUSH
- Indoor and outdoor use(IP65 certificated)
- Standalone, WEB-Based Management and network capability
- Support AUTO Get IP(DHCP) for easy setup

Specifications

GENERAL DATA	
Software Application	SoMac/Browser
Verification Mode	Mobile APP NFC/BLE/Card/PIN
Proximity	EM/Mifare/HID/DESFire
1:1 Verification Time	<600 msec
1:1,000 Identification Time	<760 msec
User Capacity	20,000
Function Keys	400 SET
Time Sets/Time Zones/Group	255/120/255 SET
Holiday Dates	100 SET
Access&Event Logs/System Logs	50000/1536
Inputs	3 Inputs, (1)Exit button (2)Door Sensor(3)Fire Alarm
Relay Outputs	1 output for Lock(COM/NO/NC)
Web Base Management	Yes
Support real time log	Yes
PUSH methodology	
Wiegand Inputs	26/34 bits Wiegand reader
Wiegand Outputs	26/34 bits Wiegand reader
IP Mode	Static IP/AUTO IP(DHCP Client)
LED Indicators	Blue/Green/Red LED

Speaker Indication	Optional
Buzzer	Single Tone
TFT Color LCD	2.8"
Capacitive Touch Keys	4x4
Anti-Tampering Switch	Yes

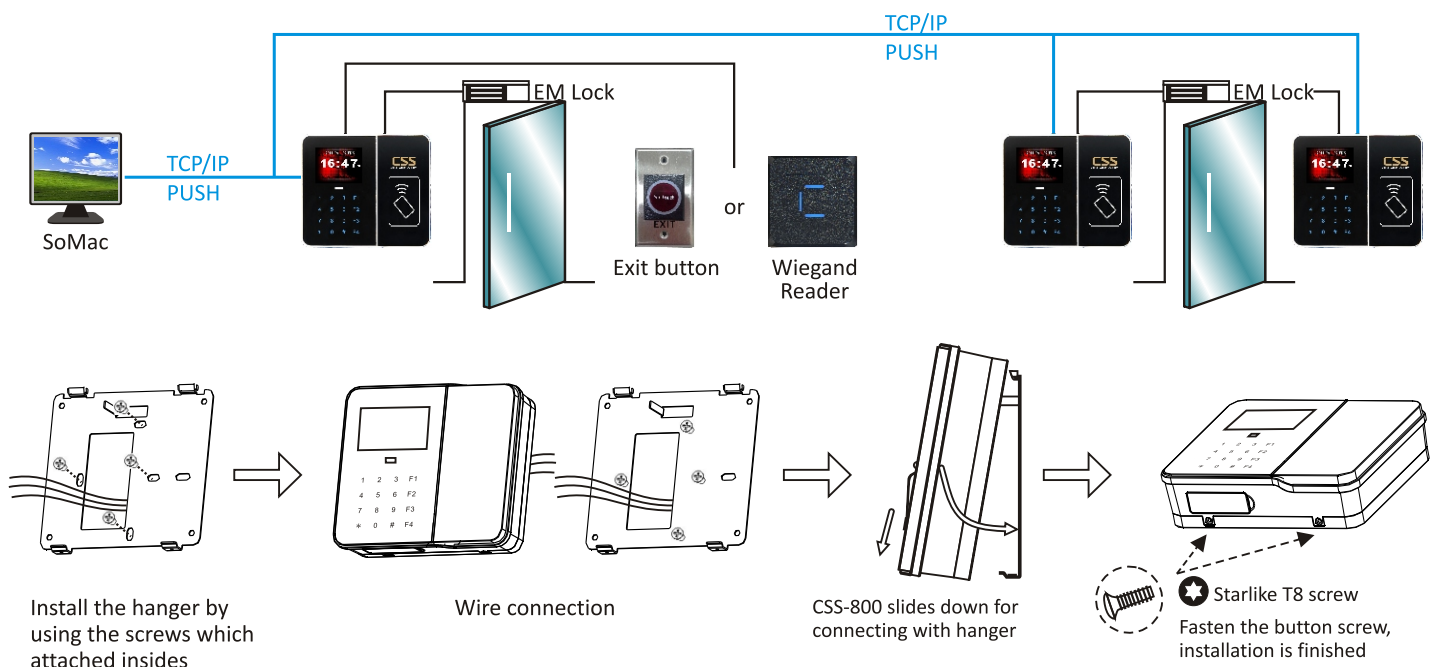
COMMUNICATION DATA	
TCP/IP	10/100 Base-T
Wiegand	26/34 bits

ELECTRICAL DATA & CONDITIONS	
Power Consumption	500 mA ± 5%
Operation Voltage	9 ~ 24VDC/1A
Output Relay	30VDC, 1A
Operation Temperature	0°C ~ 65°C
Operation Humidity	5% ~ 80% RH

PHYSICAL DATA	
Dimension	160.2x140.2x46.7mm
Weight	0.6 kg
Installation	Indoor/Outdoor(IP65 weatherproof)

INTERNATIONAL STANDARDS & WARRANTY	
Certification	CE, FCC, ROHS
Warranty	2 Years (Fingerprint module: 1 year)

Structure



Ordering information

E: EM 125KHz M: Mifare 13.56MHz H: HID 125KHz